

## Regional Update – October 2018, Edition 1

### For Information:

- LWY TSC team contacts
- English Hubs announced
- School Experience Programme (SEP) Portal
- Regional Maths Hub Leads
- Regional SEND hub Leads
- Link to current Ofsted presentations
- Ofsted presentations including guidance on pupil premium and HMCI commentary curriculum - Sept 2018
- STEM : International recruitment
- TLIF opportunities
- NSS Bursary Terms & Conditions 2018/19
- ITT teacher recruitment bulletin

### For Action:

- ❖ NLE Data Hub update
- ❖ School Experience Programme / ITT

### Opportunities:

- ✓ Leadership Equality and Diversity Funding
- ✓ Teacher Workload Reduction Toolkit, video on curriculum planning

### Dates for your diary:



The Inspiring Leadership Conference 2019 takes place at the ICC in Birmingham on the 6<sup>th</sup>-7<sup>th</sup> June 2019.

It's likely the Teaching Schools Council will be a partner in shaping and influencing the event alongside NAHT. Further details to follow.

### Lancashire and West Yorkshire:

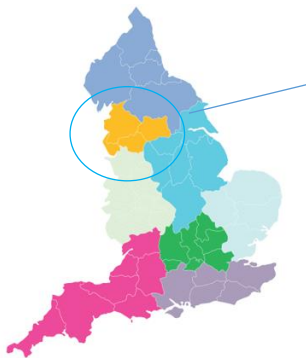
System Leader network meetings are currently being arranged within each sub region.

These will be communicated directly to the TSAs, NLEs and NLGs in WY, BBL, GMLP and LWM.

**News to follow up** - we will be sending a follow up newsletter this October.

## For Information

### LWY TSC contact, key roles and structure



Your regional representatives are:

**Amanda Bennett** – National TSC representative for LWY  
**Angela Holdsworth** – National TSC representative for LWY

**Tessa Mason** – Strategic Advice and Coordination  
**Tam Mason** – Communications and Relationship Management

Please send any queries and your ideas to [LWYTSC@gmail.com](mailto:LWYTSC@gmail.com)

Please follow us on Twitter [@LWYTSC](https://twitter.com/LWYTSC) and [#LWYgetconnected](https://twitter.com/LWYgetconnected)

## English Hubs Announced

The DfE has named 32 schools that will split £26.3 million to become national English hubs. Each hub will be tasked with identifying specialist literacy teachers who will access additional training to act as experts in teaching in early language and reading from reception year to end of Key Stage 1. Each hub will work with up to 170 primary schools in their area building a network of excellent phonics teaching in every region.

**Action:** Please access more information [here](#).



**English Hub Schools in Lancashire & West Yorkshire:** All Souls' CE Primary, Burley and Woodhead CE Primary School, Jerry Clay Academy, Outwood Primary Academy Lofthouse Gate, St John Vianney Catholic Primary School, The Greetland Academy.



## School Experience Programme (SEP) Portal

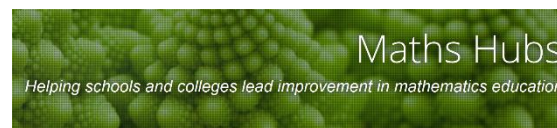


DfE are looking for Teaching Schools to take part in research about school experience, and how gaining this might be made easier for potential teachers and the schools that host them.

**Action:** The Teaching Schools Council would like to hear from all schools, regardless of whether they use the DfE's School Experience Programme (SEP) portal. Please email [Jordan.russell@education.gov.uk](mailto:Jordan.russell@education.gov.uk) if you would like to take part.

## Regional Maths Hub Leads

In June 2018 a new team of Regional Leads was recruited by the National Centre for Excellence in the Teaching of Mathematics (NCETM). **For your information** their contacts are below:



Region	NCETM Regional Lead (Senior*)	Email
Lancashire and West Yorkshire	Gaynor Bahan	<a href="mailto:gaynor.bahan@ncetm.org.uk">gaynor.bahan@ncetm.org.uk</a>
East of England and North East London	Chris Dale*	<a href="mailto:chris.dale@ncetm.org.uk">chris.dale@ncetm.org.uk</a>
North	Greg Thomas (50% job share) Paul Treversh (50% job share)	<a href="mailto:gregory.thomas@ncetm.org.uk">gregory.thomas@ncetm.org.uk</a> <a href="mailto:paul.treversh@ncetm.org.uk">paul.treversh@ncetm.org.uk</a>
South West	Annabelle Grose	<a href="mailto:annabelle.grose@ncetm.org.uk">annabelle.grose@ncetm.org.uk</a>
South East England and South London	Heidi Whitney*	<a href="mailto:heidi.whitney@ncetm.org.uk">heidi.whitney@ncetm.org.uk</a>
East Midlands and Humber	Margaret Young	<a href="mailto:margaret.young@ncetm.org.uk">margaret.young@ncetm.org.uk</a>
West Midlands	Barbara Rodgers	<a href="mailto:barbara.rodgers@ncetm.org.uk">barbara.rodgers@ncetm.org.uk</a>
South Central and North West London	Matt Lewis	<a href="mailto:matt.lewis@ncetm.org.uk">matt.lewis@ncetm.org.uk</a>

## Regional DfE (NASEN) SEND Hub Leads



**For your information** the contacts for SEND hub leads at a national and regional level are below:

- ✓ **National director:** Anne Heavey
- ✓ **National SEND leader (southern regions and academy trusts):** Malcolm Reeve
- ✓ **National SEND leader (northern regions and local authorities):** Simon Knight

Region	SEND Hub Lead	Deputy Lead
Lancashire and West Yorkshire	<b>Angela Holdsworth:</b> Executive Principal/CEO at Tor View Specialist Learning Community, Rossendale.	<b>Deputy:</b> Lidia Cattrell, head teacher of Crosshill Special school in Blackburn.
North	<b>Hugh Steele:</b> head teacher at The Dales Specialist school in Northumberland.	<b>Deputy:</b> TBC
East Midlands and the Humber	<b>Judith Smith:</b> executive head teacher at Talbot Specialist school in Sheffield.	<b>Deputy:</b> Jane Starbuck, inclusion lead at Newark Schools near Nottingham.
West Midlands	<b>Nicola Davis:</b> deputy head at The Bridge special school in Shropshire.	<b>Deputy:</b> Amanda Wright, SEND lead at Thomas Jolyffe primary school in Warwickshire.
South-Central England and North-West London	TBC	<b>Deputy:</b> Katherine Walsh, assistant head teacher and SENDCo at Brookfield primary school in north London.
East of England and North-East London	<b>Deborah Lamont:</b> director of Inclusion at Thrive partnership academy trust in Essex.	<b>Deputy TBC</b>
South East England and South London	<b>Jackie Partridge:</b> head teacher at Springwell special school in Southampton.	<b>Deputy:</b> Amelie Thompson, deputy head at Gipsy Hill Federation in South London.
South West	<b>Erica Wolstenholme:</b> SENCo at the Olympus academy trust in Bristol.	<b>Deputy:</b> Samantha Gilronan, assistant head teacher for SEND at the Lampard Community school in Devon.

## Current Ofsted presentations





Please view the following – presentations to share:

[Ofsted: current presentations](#)

[Ofsted: pupil premium guidance](#)

[Ofsted: HMCI commentary curriculum - Sept 2018](#)

### STEM International Teacher Recruitment Programme

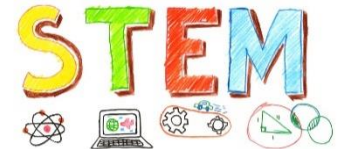
All secondary state-funded schools in England can access the science, technology, engineering and mathematics (**STEM**) international teacher recruitment programme to recruit mathematics or physics teachers. The Department for Education (DfE) will fund the:

- recruitment costs
- acclimatisation package

The recruiting school are responsible for paying the teacher's salary. All teachers recruited through our programme will have:

- qualified teacher status (QTS)
- been rigorously screened to ensure they meet safeguarding requirements

To recruit maths and physics teachers trained in Australia, New Zealand, Canada and USA; and for comprehensive guidance please access this [link](#).



**Your direct contact:** International teacher recruitment team - Email [international.teacherrecruitment@education.gov.uk](mailto:international.teacherrecruitment@education.gov.uk)

### NSS Bursary Terms & Conditions 2018/19

#### NOTICE - NSS Bursary Terms & Conditions 2018/19:

You should have received the updated terms and conditions for financial year 18-19 NLE/NSS grant.

They had immediate effect from 1<sup>st</sup> October 2018 and remain valid until further notice.

We will update you further with guidance and support for you as system leaders in order to meet these expectations.



### Teaching and Leadership Innovation Fund

Guidance

GOV.UK

#### Teaching and Leadership Innovation Fund

The [Teaching and Leadership Innovation Fund](#) (TLIF) provides free CPD opportunities for teachers and leaders in schools and areas that need support the most. A variety of programmes are available (including two new providers for the new school year) aimed at increasing teachers skills in areas such as leadership, STEM, geography, phonics and more.

Enrolment is open now for the following programmes:

- **Institute of Physics** - professional development programme for physics teachers
- **Teach First** - leader development programme
- **Institute for Teaching** - teacher development programme
- **Ruth Miskin Training** - phonics and early reading programme
- **Tom Bennett Training** - behaviour management programme
- **The Geographical Association** - geography and science programme for both primary and secondary teachers.
- **The Education Development Trust** – Accelerate programme for Early Career Teachers

**Action:** You can access more information about the providers [here](#). The programmes are available to teachers and leaders who work in an [Ofsted rated grade 3 or grade 4](#) school which is within:

- one of the [12 opportunity areas](#)
- one of the [category 5 and 6 local authority districts](#)

Schools can find out what programmes they are eligible for and enrol for the new school year at: <https://tlif.education.gov.uk/>

[The NLE data hub](#) opened for collection of 2017/18 NLE deployment data on Tuesday 25 September 2018.

You will need to provide the DfE with information about your deployments for 2017/18 by 19:00 on 12 November 2018. NLEs whose schools are also teaching schools should have already submitted data for this period via the teaching schools data hub.

Please review this information and confirm that it is correct. Further information and guidance about how to access and complete the hub can be found [here](#). If you have any questions or encounter difficulty accessing the Hub, please contact [system.leaders@education.gov.uk](mailto:system.leaders@education.gov.uk)

### School Experience Programme / ITT

Please have a look at the September 2018 edition of the **Teacher Recruitment Bulletin**; available [here](#), contains vital information to support your initial teacher training (ITT) recruitment.

Also, please share within your regional networks and encourage colleagues to subscribe by emailing [teacher.recruitmentbulletin@education.gov.uk](mailto:teacher.recruitmentbulletin@education.gov.uk).

You can see the [last 3 issues](#) on GOV.UK.



### Regional Opportunities

#### Leadership Equality and Diversity Fund

Recently applications have been invited from good or outstanding schools, teaching school alliances and/or multi-academy trusts in the region who are interested in addressing diversity in school leadership.

Further information on the programme is available [here](#). Please cascade the information to schools in your networks and other system leaders leading on CPD and or Equality and Diversity.

We will continue to update you on this opportunity in our next newsletter.

If you are considering an application now or in the future, our regional contact for advice and information is [baljitbirring@indigodiversity.co.uk](mailto:baljitbirring@indigodiversity.co.uk)

**Twitter:** Follow this programme @LEAD\_LWY

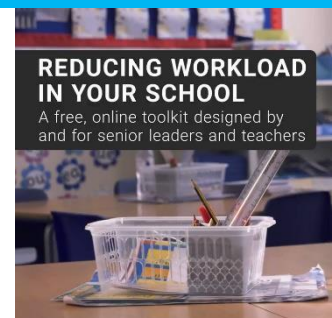


### Teacher Workload Reduction Toolkit - Update

#### [The workload reduction toolkit](#)

This [resource](#) has been developed with teachers, school leaders and technology experts and offers a suggested three-stage process which is easy to access and simple to navigate: first stage – identifying the workload issues in school(s), second stage – addressing the issues and third stage - evaluating impact.

There is no obligation for schools to use the toolkit, although **as an action** we would encourage TSAs to consider how it could be incorporated into existing and new plans – as all of the workshops and tools can be easily adapted according to your own context and need.



#### **Feedback: A call to TSAs, NLEs and NLGs:**

The Teacher Workload Unit is keen to receive feedback on the toolkit and are actively looking for schools to help them in their user research during the year. Please consider getting involved in the development of this national resource – contact the team directly with your feedback and/or if you would to be involved in any way - user research, being a case study or sharing tools/resources at: [Workload.SOLUTIONS@education.gov.uk](mailto:Workload.SOLUTIONS@education.gov.uk)

#### **Video on shared curriculum planning:**

Linked to the workload resources is a video now available exploring long term collaborative planning. It includes a case study of shared planning from Whitley Bay High School. You can share and view it [here](#).



Please send any queries and your ideas to [LWYTSC@gmail.com](mailto:LWYTSC@gmail.com), also please follow us on Twitter @LWYTSC and #LWYgetconnected

All the best from the TSC LWY team:

- Amanda Bennett** – National TSC representative for LWY
- Angela Holdsworth** – National TSC representative for LWY
- Tessa Mason** – Strategic Advice and Coordination
- Tam Mason** – Communications and Relationship Management

**The Teaching School Council** (TSC) is a national body representing all Teaching Schools in England. The Council is made up of 20 elected members with either a national or regional remit, who direct or shape the work of Teaching Schools through discussion with government ministers and senior officials.



We believe that **every child is entitled to be in a great school.**

There are three commitments that we make as a Teaching School Council.

We seek to ensure that every school in England is:

- able to access relevant and timely support
- prepared to be a giver of support
- in an effective partnership

